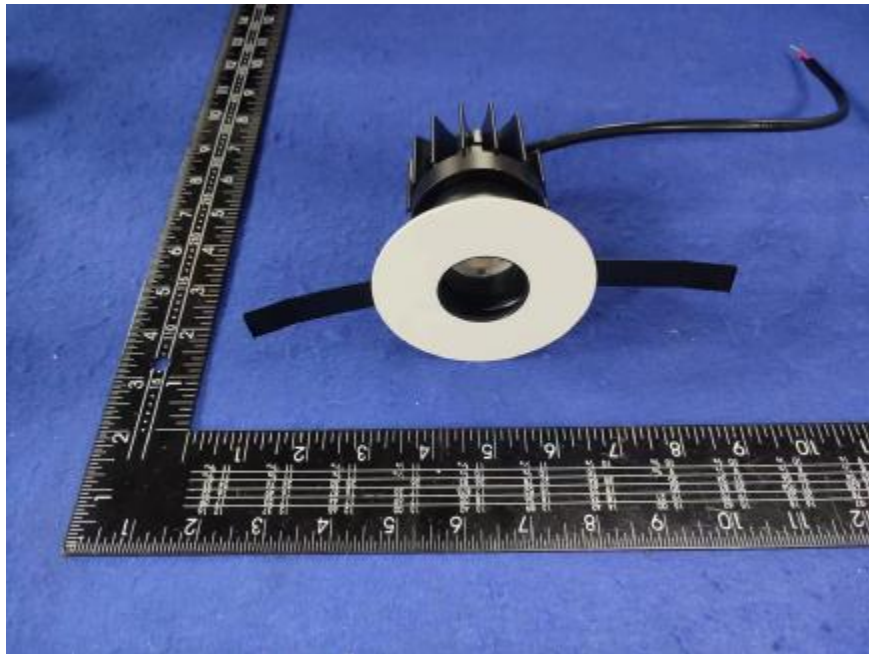


Luminaire Photograph



| | | |
|---------------------|---------|--------------------------|
| Light Output Ratio: | 60.6% | |
| Luminaire Power: | 10.13 W | |
| SHR Nominal: | 0.50 | Calculated using the TM5 |
| SHR Maximum: | 0.65 | fine grid method. |

C Range: 0 - 360DEG
C Interval: 30.0DEG
Test Speed: HIGH
Temperature: 25.3 °C
Operators: zoe
Test Date: 2024-5-23

Range: 0 - 180DEG
Interval: 1.0DEG
Test System: EVERFINE GO-SPEX500_V1 SYSTEM V2.00.461
Humidity: 65.0%
Test Distance: 3.160m [K=1.0000]
Remarks: LAMP: BXRE-30G10TH-A-83 Ra: 90
LENS: PM-1082B-WH 36R
NO DRIVER: 300mA
30minutes warm-up

LUMINOUS INTENSITY DISTRIBUTION DIAGRAM

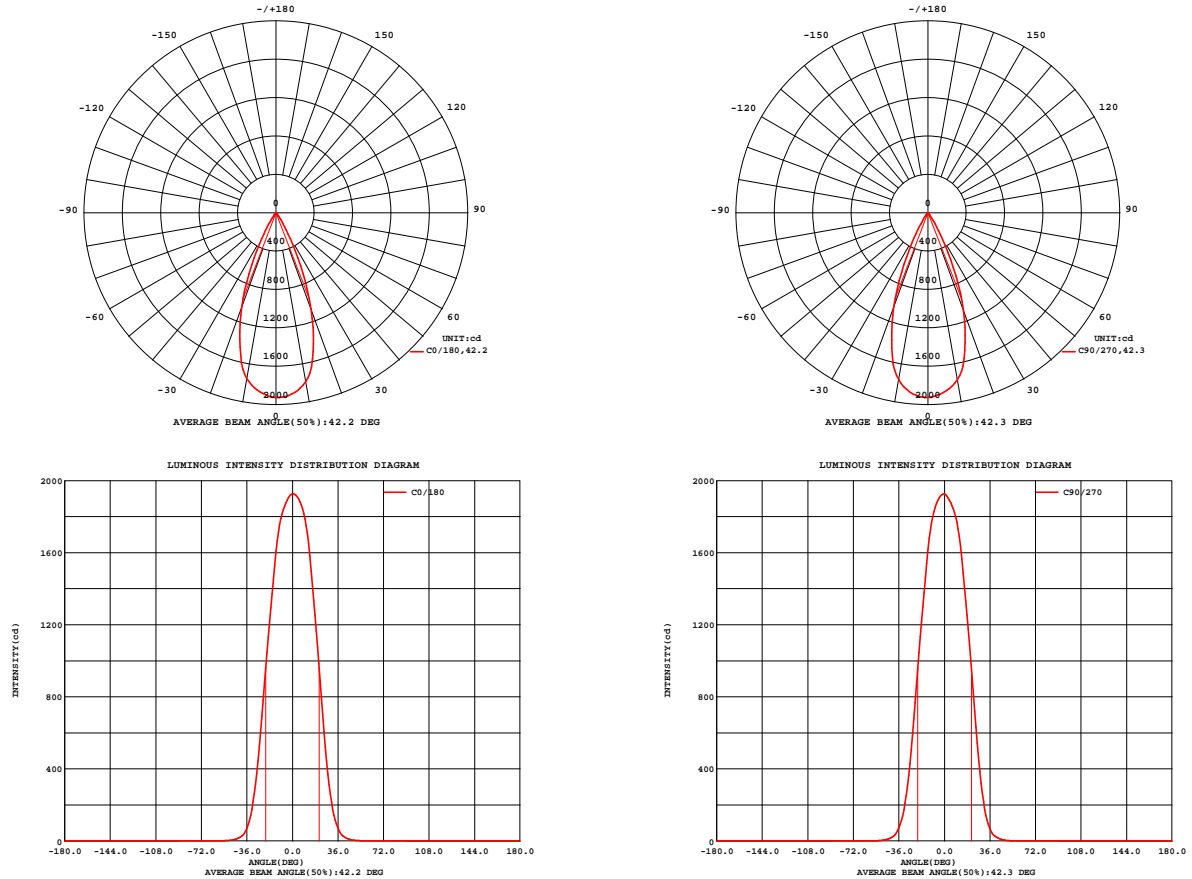


Fig. C0/C180

Fig. C90/C270

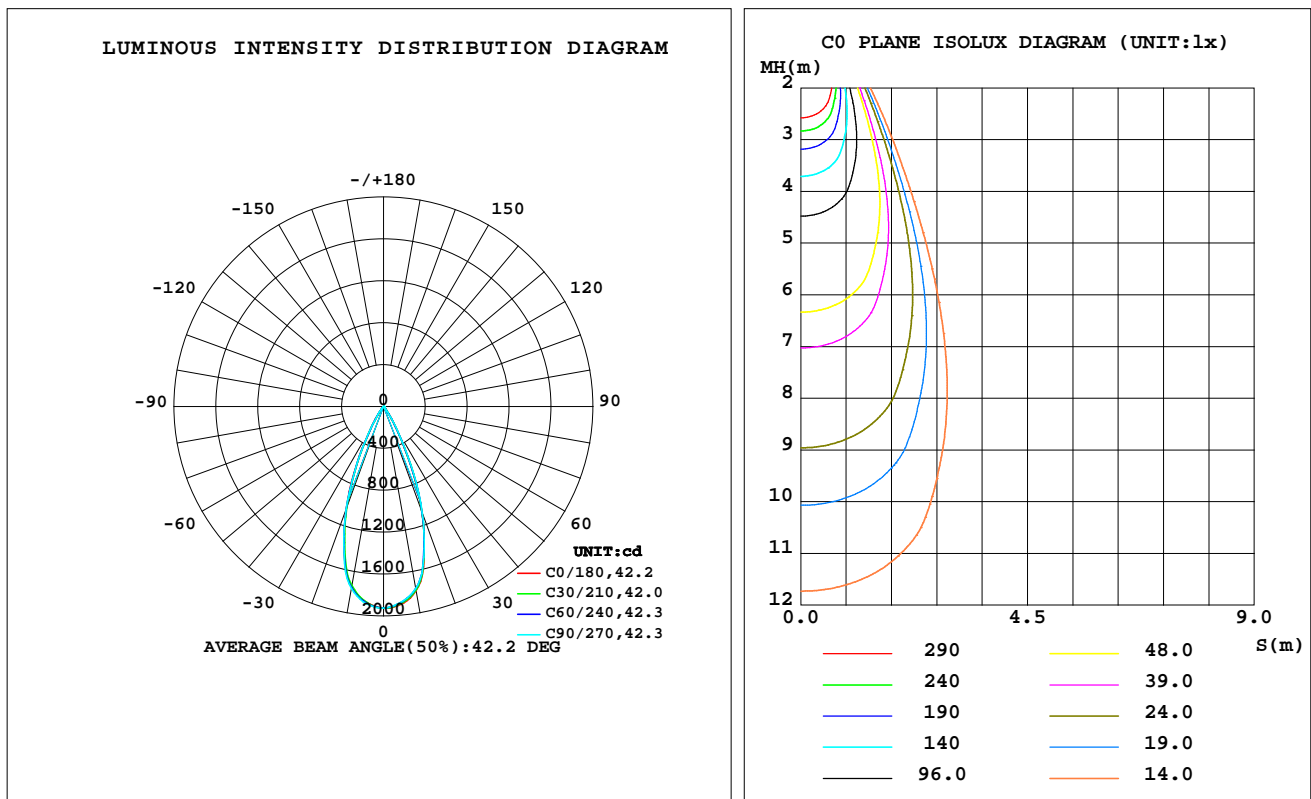
C Range: 0 - 360DEG
 C Interval: 30.0DEG
 Test Speed: HIGH
 Temperature: 25.3 °C
 Operators: zoe
 Test Date: 2024-5-23

Range: 0 - 180DEG
 Interval: 1.0DEG
 Test System: EVERFINE GO-SPEX500_V1 SYSTEM V2.00.461
 Humidity: 65.0%
 Test Distance: 3.160m [K=1.0000]
 Remarks: LAMP: BXRE-30G10TH-A-83 Ra: 90
 LENS: PM-1082B-WH 36R
 NO DRIVER: 300mA
 30minutes warm-up

LUMINAIRE PHOTOMETRIC TEST REPORT

| | | |
|---|---------------------|------------------------|
| Test:U:33.776V I:0.3000A P:10.133W PF:1.0000 Freq:0Hz Lamp Flux:1537.95x1 lm | | |
| NAME: 2318.113-LEE-24-HE | TYPE: | WEIGHT: |
| SPEC.: 3000K | DIM.: | SERIAL No.: 2405230576 |
| MFR.: RISE | SUR.: 0.000961625m2 | Shielding Angle: |

| DATA OF LAMP | | PHOTOMETRIC DATA Eff: 92.00 lm/W | | | |
|------------------|-----------|----------------------------------|--------|-----------------|----------|
| MODEL | Brideglux | Imax(cd) | 1926 | S/MH(C0/180) | 0.65 |
| NOMINAL POWER(W) | 10 | LOR(%) | 60.6 | S/MH(C90/270) | 0.64 |
| RATED VOLTAGE(V) | 34 | TOTAL FLUX(lm) | 932.26 | UP,DN(C0-180) | 0.0,30.5 |
| NOMINAL FLUX(lm) | 1537.95 | CIE CLASS | DIRECT | UP,DN(C180-360) | 0.0,30.1 |
| LAMPS INSIDE | 1 | up(%) | 0.0 | CIBSE SHR NOM | 0.50 |
| TEST VOLTAGE(V) | 34 | down(%) | 60.6 | CIBSE SHR MAX | 0.65 |



C Range: 0 - 360DEG
C Interval: 30.0DEG
Test Speed: HIGH
Temperature:25.3℃
Operators:zoe
Test Date:2024-5-23

Range: 0 - 180DEG
Interval: 1.0DEG
Test System:EVERFINE GO-SPEX500_V1 SYSTEM V2.00.461
Humidity:65.0%
Test Distance:3.160m [K=1.0000]
Remarks: LAMP:BXRE-30G10TH-A-83 Ra:90
LENS:PM-1082B-WH 36R
NO DRIVER:300mA
30minutes warm-up

ZONAL FLUX DIAGRAM

ZONAL FLUX DIAGRAM:

| | C0 | C45 | C90 | C135 | C180 | C225 | C270 | C315 | | zone | total | %lum,lamp |
|-----|-----------------------|--------|--------|--------|--------|--------|--------|--------|---------|---------|-------|-----------|
| 10 | 1786 | 1774 | 1766 | 1756 | 1754 | 1747 | 1765 | 1794 | 0- 10 | 176.3 | 176.3 | 18.9,11.5 |
| 20 | 1076 | 1079 | 1089 | 1068 | 1048 | 1039 | 1046 | 1074 | 10- 20 | 402.3 | 578.6 | 62.1,37.6 |
| 30 | 257.9 | 258.8 | 264.0 | 264.0 | 259.5 | 251.1 | 251.5 | 255.3 | 20- 30 | 278.4 | 857.0 | 91.9,55.7 |
| 40 | 28.35 | 27.94 | 27.05 | 27.14 | 27.26 | 26.72 | 27.70 | 27.12 | 30- 40 | 64.97 | 921.9 | 98.9,59.9 |
| 50 | 3.333 | 2.808 | 2.599 | 2.757 | 3.045 | 3.176 | 2.999 | 3.067 | 40- 50 | 8.531 | 930.5 | 99.8,60.5 |
| 60 | 0.7762 | 0.5428 | 0.4744 | 0.5422 | 0.7594 | 0.7133 | 0.6604 | 0.7089 | 50- 60 | 1.289 | 931.8 | 99.9,60.6 |
| 70 | 0.2570 | 0.1253 | 0.0896 | 0.1188 | 0.2486 | 0.2249 | 0.2115 | 0.2303 | 60- 70 | 0.3183 | 932.1 | 100,60.6 |
| 80 | 0.1019 | 0.0752 | 0.0722 | 0.0693 | 0.0903 | 0.0945 | 0.1034 | 0.0985 | 70- 80 | 0.1428 | 932.2 | 100,60.6 |
| 90 | 0 | 0 | 0 | 0 | 0 | 0 | 0 | 0 | 80- 90 | 0.0472 | 932.3 | 100,60.6 |
| 100 | 0 | 0 | 0 | 0 | 0 | 0 | 0 | 0 | 90-100 | 0 | 932.3 | 100,60.6 |
| 110 | 0 | 0 | 0 | 0 | 0 | 0 | 0 | 0 | 100-110 | 0 | 932.3 | 100,60.6 |
| 120 | 0 | 0 | 0 | 0 | 0 | 0 | 0 | 0 | 110-120 | 0 | 932.3 | 100,60.6 |
| 130 | 0 | 0 | 0 | 0 | 0 | 0 | 0 | 0 | 120-130 | 0 | 932.3 | 100,60.6 |
| 140 | 0 | 0 | 0 | 0 | 0 | 0 | 0 | 0 | 130-140 | 0 | 932.3 | 100,60.6 |
| 150 | 0 | 0 | 0 | 0 | 0 | 0 | 0 | 0 | 140-150 | 0 | 932.3 | 100,60.6 |
| 160 | 0 | 0 | 0 | 0 | 0 | 0 | 0 | 0 | 150-160 | 0 | 932.3 | 100,60.6 |
| 170 | 0 | 0 | 0 | 0 | 0 | 0 | 0 | 0 | 160-170 | 0 | 932.3 | 100,60.6 |
| 180 | 0 | 0 | 0 | 0 | 0 | 0 | 0 | 0 | 170-180 | 0 | 932.3 | 100,60.6 |
| DEG | LUMINOUS INTENSITY:cd | | | | | | | | | UNIT:lm | | |

C Range: 0 - 360DEG
C Interval: 30.0DEG
Test Speed: HIGH
Temperature:25.3℃
Operators:zoe
Test Date:2024-5-23

Range: 0 - 180DEG
Interval: 1.0DEG
Test System:EVERFINE GO-SPEX500_V1 SYSTEM V2.00.461
Humidity:65.0%
Test Distance:3.160m [K=1.0000]
Remarks: LAMP:BXRE-30G10TH-A-83 Ra:90
LENS:PM-1082B-WH 36R
NO DRIVER:300mA
30minutes warm-up

LUMINANCE LIMITATION CURVES

Test:U:33.776V I:0.3000A P:10.133W PF:1.0000 Freq:0Hz
Lamp Flux:1537.95x1 lm

NAME: 2318.113-LEE-24-HE

TYPE:

WEIGHT:

SPEC.: 3000K

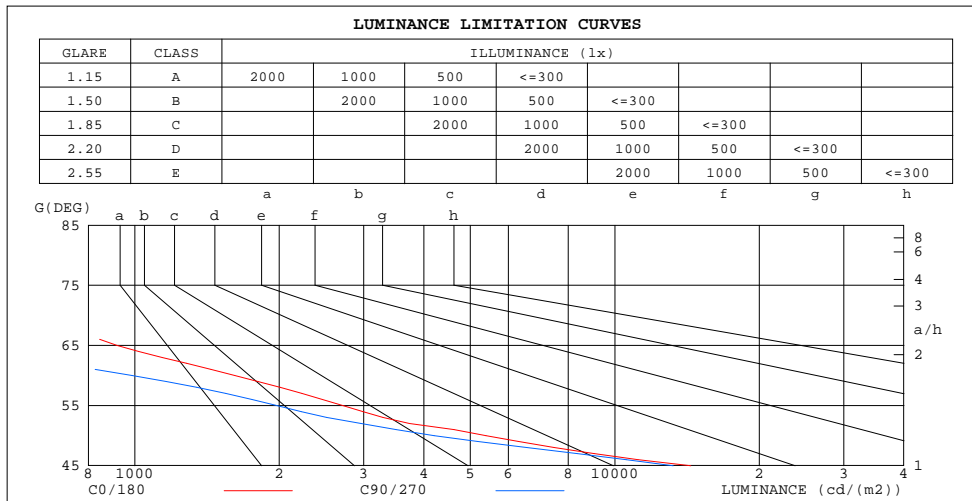
DIM.:

SERIAL No.: 2405230576

MFR.: RISE

SUR.: 0.000961625m2

Shielding Angle:



| LUMINANCE cd/(m2) | | |
|-------------------|--------|---------|
| G(180) | C0/180 | C90/270 |
| 85 | 674 | 490 |
| 80 | 610 | 433 |
| 75 | 705 | 340 |
| 70 | 781 | 273 |
| 65 | 918 | 347 |
| 60 | 1614 | 987 |
| 55 | 2713 | 1978 |
| 50 | 5392 | 4206 |
| 45 | 14392 | 13232 |

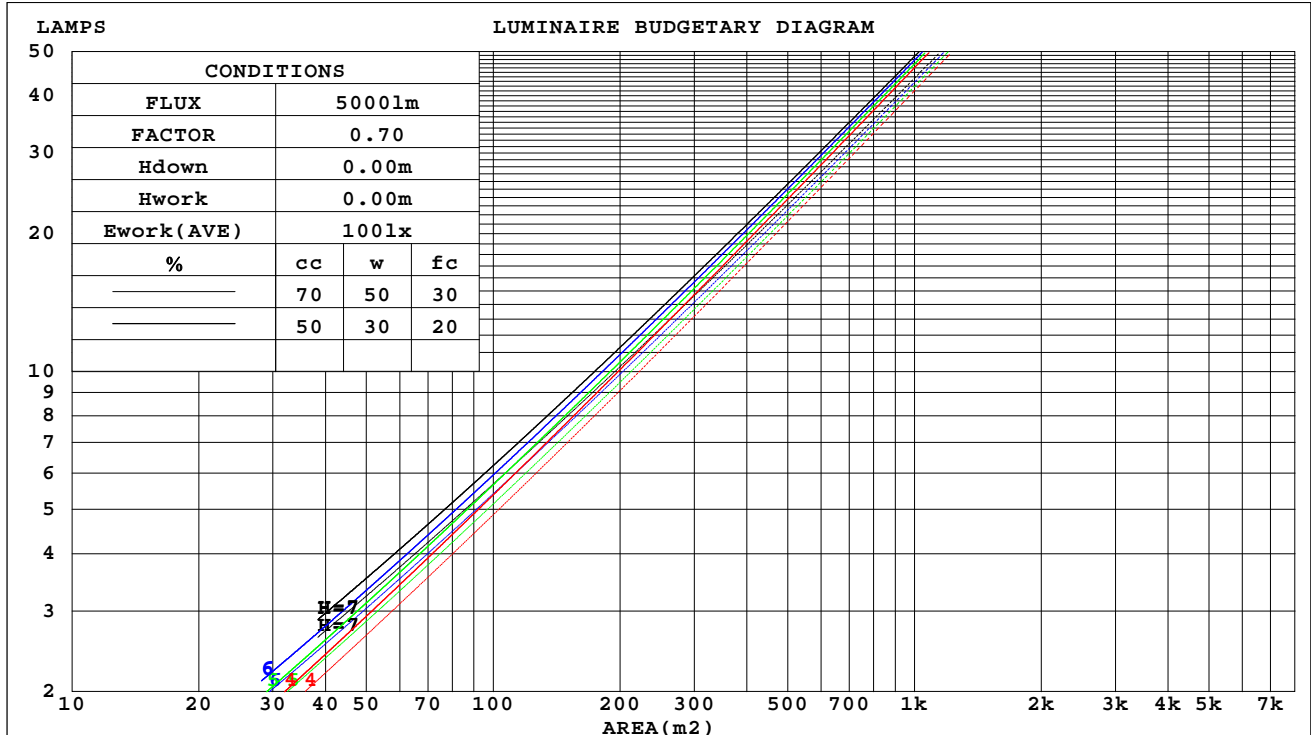
C Range: 0 - 360DEG
C Interval: 30.0DEG
Test Speed: HIGH
Temperature:25.3℃
Operators:zoe
Test Date:2024-5-23

Range: 0 - 180DEG
Interval: 1.0DEG
Test System:EVERFINE GO-SPEX500_V1 SYSTEM V2.00.461
Humidity:65.0%
Test Distance:3.160m [K=1.0000]
Remarks: LAMP:BXRE-30G10TH-A-83 Ra:90
LENS:PM-1082B-WH 36R
NO DRIVER:300mA
30minutes warm-up

CU AND LUMINAIRE BUDGETARY ESTIMATE DIAGRAM

| | | |
|---|---------------------|------------------------|
| Test:U:33.776V I:0.3000A P:10.133W PF:1.0000 Freq:0Hz Lamp Flux:1537.95x1 lm | | |
| NAME: 2318.113-LEE-24-HE | TYPE: | WEIGHT: |
| SPEC.: 3000K | DIM.: | SERIAL No.: 2405230576 |
| MFR.: RISE | SUR.: 0.000961625m2 | Shielding Angle: |

| cc | 80% | | | 70% | | | 50% | | | 30% | | | 10% | | | 0 |
|------|-----------------------|-----|-----|---------------------------------|-----|-----|-----|-----|-----|-----|-----|-----|-----|-----|-----|-----|
| w | 50% | 30% | 10% | 50% | 30% | 10% | 50% | 30% | 10% | 50% | 30% | 10% | 50% | 30% | 10% | 0 |
| fc | 20% | | | 20% | | | 20% | | | 20% | | | 20% | | | 0 |
| RCR | RCR:Room Cavity Ratio | | | Coefficients of Utilization(CU) | | | | | | | | | | | | |
| 0.0 | .72 | .72 | .72 | .70 | .70 | .70 | .67 | .67 | .67 | .64 | .64 | .64 | .62 | .62 | .62 | .61 |
| 1.0 | .68 | .67 | .65 | .67 | .65 | .64 | .64 | .63 | .62 | .62 | .61 | .61 | .60 | .59 | .59 | .58 |
| 2.0 | .64 | .62 | .60 | .63 | .61 | .60 | .61 | .60 | .58 | .59 | .58 | .57 | .58 | .57 | .56 | .55 |
| 3.0 | .61 | .58 | .56 | .60 | .58 | .56 | .59 | .57 | .55 | .57 | .56 | .54 | .56 | .54 | .53 | .53 |
| 4.0 | .58 | .55 | .53 | .57 | .55 | .53 | .56 | .54 | .52 | .55 | .53 | .51 | .54 | .52 | .51 | .50 |
| 5.0 | .55 | .52 | .50 | .55 | .52 | .50 | .54 | .51 | .49 | .53 | .51 | .49 | .52 | .50 | .49 | .48 |
| 6.0 | .53 | .50 | .48 | .52 | .49 | .47 | .51 | .49 | .47 | .51 | .48 | .47 | .50 | .48 | .46 | .46 |
| 7.0 | .50 | .47 | .45 | .50 | .47 | .45 | .49 | .47 | .45 | .49 | .46 | .45 | .48 | .46 | .44 | .44 |
| 8.0 | .48 | .45 | .43 | .48 | .45 | .43 | .47 | .45 | .43 | .47 | .44 | .43 | .46 | .44 | .43 | .42 |
| 9.0 | .46 | .43 | .41 | .46 | .43 | .41 | .45 | .43 | .41 | .45 | .43 | .41 | .45 | .42 | .41 | .40 |
| 10.0 | .44 | .42 | .40 | .44 | .41 | .40 | .44 | .41 | .39 | .43 | .41 | .39 | .43 | .41 | .39 | .39 |



C Range: 0 - 360DEG
C Interval: 30.0DEG
Test Speed: HIGH
Temperature:25.3℃
Operators:zoe
Test Date:2024-5-23

Range: 0 - 180DEG
Interval: 1.0DEG
Test System:EVERFINE GO-SPEX500_V1 SYSTEM V2.00.461
Humidity:65.0%
Test Distance:3.160m [K=1.0000]
Remarks: LAMP:BXRE-30G10TH-A-83 Ra:90
LENS:PM-1082B-WH 36R
NO DRIVER:300mA
30minutes warm-up

WEC AND CCEC

| | | |
|---|---------------------|------------------------|
| Test:U:33.776V I:0.3000A P:10.133W PF:1.0000 Freq:0Hz Lamp Flux:1537.95x1 lm | | |
| NAME: 2318.113-LEE-24-HE | TYPE: | WEIGHT: |
| SPEC.: 3000K | DIM.: | SERIAL No.: 2405230576 |
| MFR.: RISE | SUR.: 0.000961625m2 | Shielding Angle: |

| cc | 80% | | | 70% | | | 50% | | | 30% | | | 10% | | | 0 |
|------|-----------------------|------|------|------|------|------|---------------------------------|------|------|------|------|------|------|------|------|---|
| w | 50% | 30% | 10% | 50% | 30% | 10% | 50% | 30% | 10% | 50% | 30% | 10% | 50% | 30% | 10% | 0 |
| fc | 20% | | | 20% | | | 20% | | | 20% | | | 20% | | | 0 |
| RCR | RCR:Room Cavity Ratio | | | | | | Wall Exitance Coefficients(WEC) | | | | | | | | | |
| 0.0 | | | | | | | | | | | | | | | | |
| 1.0 | .092 | .053 | .017 | .088 | .050 | .016 | .081 | .046 | .015 | .074 | .043 | .014 | .068 | .039 | .013 | |
| 2.0 | .087 | .048 | .015 | .084 | .046 | .014 | .077 | .043 | .013 | .072 | .040 | .013 | .066 | .037 | .012 | |
| 3.0 | .082 | .044 | .013 | .079 | .042 | .013 | .074 | .040 | .012 | .069 | .038 | .012 | .064 | .036 | .011 | |
| 4.0 | .078 | .040 | .012 | .075 | .039 | .012 | .071 | .037 | .011 | .067 | .036 | .011 | .063 | .034 | .010 | |
| 5.0 | .074 | .038 | .011 | .072 | .037 | .011 | .068 | .035 | .010 | .064 | .034 | .010 | .061 | .032 | .010 | |
| 6.0 | .070 | .035 | .010 | .068 | .035 | .010 | .065 | .033 | .010 | .062 | .032 | .009 | .059 | .031 | .009 | |
| 7.0 | .067 | .033 | .009 | .066 | .033 | .009 | .063 | .032 | .009 | .060 | .031 | .009 | .057 | .030 | .009 | |
| 8.0 | .064 | .031 | .009 | .063 | .031 | .009 | .060 | .030 | .009 | .058 | .029 | .008 | .056 | .029 | .008 | |
| 9.0 | .062 | .030 | .008 | .061 | .030 | .008 | .058 | .029 | .008 | .056 | .028 | .008 | .054 | .027 | .008 | |
| 10.0 | .059 | .029 | .008 | .058 | .028 | .008 | .056 | .028 | .008 | .054 | .027 | .008 | .052 | .026 | .008 | |

| cc | 80% | | | 70% | | | 50% | | | 30% | | | 10% | | | 0 | |
|------|-----------------------|------|------|------|------|------|--|------|------|------|------|------|------|------|------|---|--|
| w | 50% | 30% | 10% | 50% | 30% | 10% | 50% | 30% | 10% | 50% | 30% | 10% | 50% | 30% | 10% | 0 | |
| fc | 20% | | | 20% | | | 20% | | | 20% | | | 20% | | | 0 | |
| RCR | RCR:Room Cavity Ratio | | | | | | Ceiling Cavity Exitance Coefficients(CCEC) | | | | | | | | | | |
| 0.0 | .115 | .115 | .115 | .099 | .099 | .099 | .067 | .067 | .067 | .039 | .039 | .039 | .012 | .012 | .012 | | |
| 1.0 | .103 | .095 | .089 | .088 | .082 | .077 | .060 | .056 | .053 | .035 | .033 | .031 | .011 | .011 | .010 | | |
| 2.0 | .092 | .080 | .070 | .079 | .069 | .061 | .054 | .048 | .042 | .031 | .028 | .025 | .010 | .009 | .008 | | |
| 3.0 | .084 | .069 | .057 | .072 | .059 | .049 | .049 | .041 | .034 | .029 | .024 | .020 | .009 | .008 | .007 | | |
| 4.0 | .077 | .060 | .046 | .066 | .051 | .040 | .045 | .036 | .028 | .026 | .021 | .017 | .008 | .007 | .006 | | |
| 5.0 | .071 | .052 | .038 | .061 | .045 | .033 | .042 | .032 | .024 | .024 | .019 | .014 | .008 | .006 | .005 | | |
| 6.0 | .066 | .046 | .032 | .057 | .040 | .028 | .039 | .028 | .020 | .023 | .017 | .012 | .007 | .005 | .004 | | |
| 7.0 | .062 | .042 | .027 | .053 | .036 | .024 | .037 | .025 | .017 | .021 | .015 | .010 | .007 | .005 | .003 | | |
| 8.0 | .058 | .038 | .024 | .050 | .033 | .021 | .035 | .023 | .015 | .020 | .014 | .009 | .007 | .004 | .003 | | |
| 9.0 | .055 | .034 | .020 | .047 | .030 | .018 | .033 | .021 | .013 | .019 | .012 | .008 | .006 | .004 | .003 | | |
| 10.0 | .052 | .032 | .018 | .045 | .027 | .016 | .031 | .019 | .011 | .018 | .011 | .007 | .006 | .004 | .002 | | |

C Range: 0 - 360DEG
C Interval: 30.0DEG
Test Speed: HIGH
Temperature:25.3℃
Operators:zoe
Test Date:2024-5-23

Range: 0 - 180DEG
Interval: 1.0DEG
Test System:EVERFINE GO-SPEX500_V1 SYSTEM V2.00.461
Humidity:65.0%
Test Distance:3.160m [K=1.0000]
Remarks: LAMP:BXRE-30G10TH-A-83 Ra:90
LENS:PM-1082B-WH 36R
NO DRIVER:300mA
30minutes warm-up

UGR(Unified Glare Rating) Table

| | | | | | | | | | | |
|---|------------------|------|------|------|---------------------|----------------|------|------------------------|------|------|
| Test:U:33.776V I:0.3000A P:10.133W PF:1.0000 Freq:0Hz Lamp Flux:1537.95x1 lm | | | | | | | | | | |
| NAME: 2318.113-LEE-24-HE | | | | | TYPE: | | | WEIGHT: | | |
| SPEC.: 3000K | | | | | DIM.: | | | SERIAL No.: 2405230576 | | |
| MFR.: RISE | | | | | SUR.: 0.000961625m2 | | | Shielding Angle: | | |
| ceiling/cavity | 0.7 | 0.7 | 0.5 | 0.5 | 0.3 | 0.7 | 0.7 | 0.5 | 0.5 | 0.3 |
| walls | 0.5 | 0.3 | 0.5 | 0.3 | 0.3 | 0.5 | 0.3 | 0.5 | 0.3 | 0.3 |
| working plane | 0.2 | 0.2 | 0.2 | 0.2 | 0.2 | 0.2 | 0.2 | 0.2 | 0.2 | 0.2 |
| Room dimensions | Viewed crosswise | | | | | Viewed endwise | | | | |
| x = 2H y = 2H | 14.8 | 15.6 | 15.0 | 15.8 | 15.9 | 14.7 | 15.5 | 14.9 | 15.7 | 15.8 |
| 3H | 14.7 | 15.4 | 14.9 | 15.6 | 15.8 | 14.6 | 15.3 | 14.8 | 15.5 | 15.7 |
| 4H | 14.6 | 15.3 | 14.9 | 15.5 | 15.7 | 14.5 | 15.2 | 14.8 | 15.4 | 15.6 |
| 6H | 14.5 | 15.1 | 14.8 | 15.4 | 15.6 | 14.4 | 15.0 | 14.7 | 15.3 | 15.5 |
| 8H | 14.5 | 15.1 | 14.8 | 15.3 | 15.6 | 14.4 | 15.0 | 14.7 | 15.2 | 15.5 |
| 12H | 14.4 | 15.0 | 14.7 | 15.3 | 15.5 | 14.3 | 14.9 | 14.6 | 15.2 | 15.4 |
| 4H 2H | 14.6 | 15.3 | 14.9 | 15.5 | 15.7 | 14.5 | 15.2 | 14.8 | 15.4 | 15.6 |
| 3H | 14.4 | 15.0 | 14.7 | 15.3 | 15.5 | 14.3 | 14.9 | 14.6 | 15.2 | 15.4 |
| 4H | 14.3 | 14.9 | 14.7 | 15.2 | 15.5 | 14.2 | 14.8 | 14.6 | 15.0 | 15.4 |
| 6H | 14.2 | 14.7 | 14.6 | 15.0 | 15.4 | 14.1 | 14.6 | 14.5 | 14.9 | 15.3 |
| 8H | 14.2 | 14.6 | 14.6 | 15.0 | 15.3 | 14.1 | 14.5 | 14.5 | 14.9 | 15.2 |
| 12H | 14.1 | 14.5 | 14.5 | 14.9 | 15.3 | 14.0 | 14.4 | 14.4 | 14.8 | 15.2 |
| 8H 4H | 14.2 | 14.6 | 14.6 | 15.0 | 15.3 | 14.1 | 14.5 | 14.5 | 14.9 | 15.2 |
| 6H | 14.1 | 14.4 | 14.5 | 14.8 | 15.2 | 14.0 | 14.3 | 14.4 | 14.7 | 15.1 |
| 8H | 14.0 | 14.3 | 14.5 | 14.7 | 15.2 | 13.9 | 14.2 | 14.3 | 14.6 | 15.1 |
| 12H | 14.0 | 14.2 | 14.4 | 14.7 | 15.1 | 13.8 | 14.1 | 14.3 | 14.6 | 15.0 |
| 12H 4H | 14.1 | 14.5 | 14.5 | 14.9 | 15.3 | 14.0 | 14.4 | 14.4 | 14.8 | 15.2 |
| 6H | 14.0 | 14.3 | 14.5 | 14.7 | 15.2 | 13.9 | 14.2 | 14.3 | 14.6 | 15.1 |
| 8H | 14.0 | 14.2 | 14.4 | 14.7 | 15.1 | 13.8 | 14.1 | 14.3 | 14.6 | 15.0 |
| Variations with the observer position at spacings(CIE Pub.117): | | | | | | | | | | |
| S = 1.0H | + 4.4 / -14.6 | | | | | + 4.3 / -16.5 | | | | |
| 1.5H | + 6.9 / -12.9 | | | | | + 6.8 / -13.6 | | | | |
| 2.0H | + 7.3 / - 8.6 | | | | | + 7.4 / -10.1 | | | | |

CIE Pub.117, 1538 lm Total Lamp Luminous Flux Correct (8log(F/F0) = 1.5)
Area: 0.000961625 m2

C Range: 0 - 360DEG
C Interval: 30.0DEG
Test Speed: HIGH
Temperature:25.3℃
Operators:zoe
Test Date:2024-5-23

Range: 0 - 180DEG
Interval: 1.0DEG
Test System:EVERFINE GO-SPEX500_V1 SYSTEM V2.00.461
Humidity:65.0%
Test Distance:3.160m [K=1.0000]
Remarks: LAMP:BXRE-30G10TH-A-83 Ra:90
LENS:PM-1082B-WH 36R
NO DRIVER:300mA
30minutes warm-up

UTILIZATION FACTORS TABLE

| | | |
|---|---------------------|------------------------|
| Test:U:33.776V I:0.3000A P:10.133W PF:1.0000 Freq:0Hz Lamp Flux:1537.95x1 lm | | |
| NAME: 2318.113-LEE-24-HE | TYPE: | WEIGHT: |
| SPEC.: 3000K | DIM.: | SERIAL No.: 2405230576 |
| MFR.: RISE | SUR.: 0.000961625m2 | Shielding Angle: |

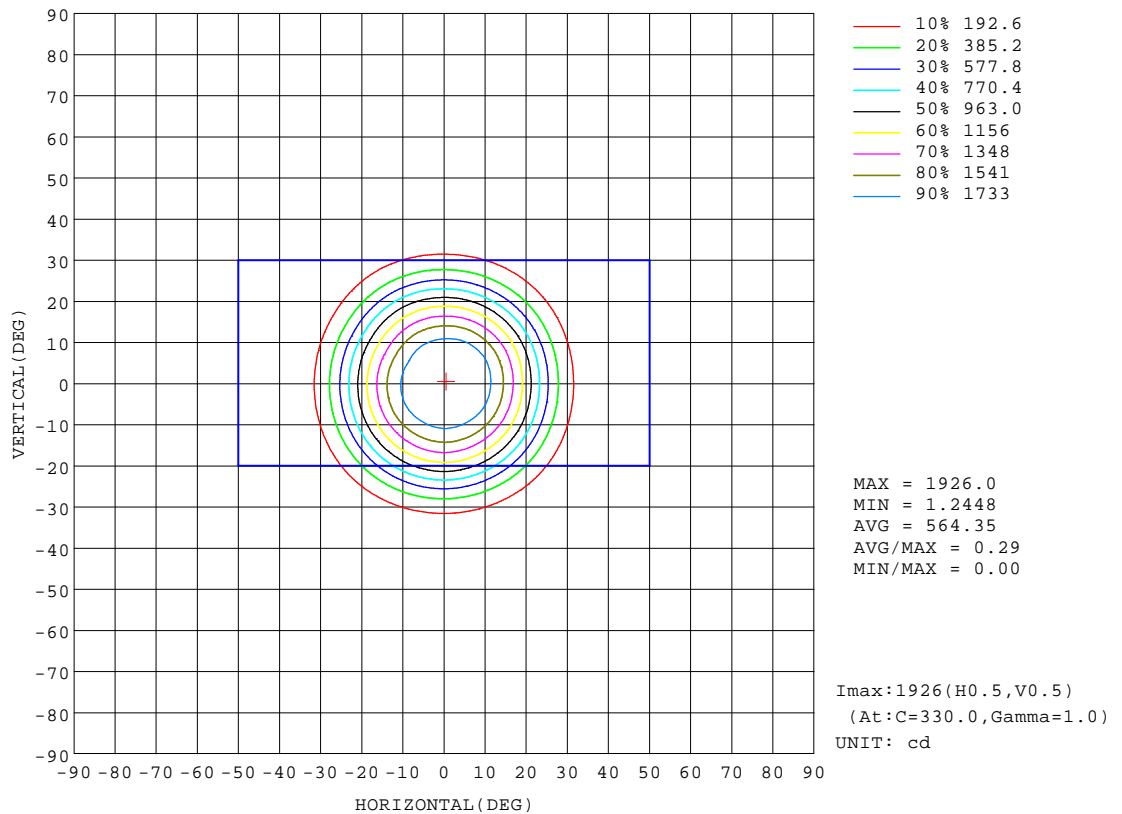
| REFLECTANCE | | | | | | | | | | |
|----------------------------------|---|-----|-----------|-----|-----|-----|-----|---------------|-----|--------|
| Ceiling | 0.8 | 0.8 | 0.8 | 0.7 | 0.7 | 0.7 | 0.5 | 0.5 | 0.5 | 0 |
| Walls | 0.7 | 0.5 | 0.3 | 0.7 | 0.5 | 0.3 | 0.7 | 0.5 | 0.3 | 0 |
| Working plane | 0.2 | 0.2 | 0.2 | 0.2 | 0.2 | 0.2 | 0.2 | 0.2 | 0.2 | 0 |
| ROOM INDEX | UTILIZATION FACTORS(PERCENT) $k(RI) \times RCR = 5$ | | | | | | | | | |
| k = 0.60 | 55 | 52 | 50 | 55 | 52 | 50 | 54 | 51 | 49 | 47 |
| 0.80 | 59 | 56 | 54 | 59 | 56 | 54 | 58 | 56 | 54 | 52 |
| 1.00 | 62 | 59 | 57 | 61 | 58 | 56 | 60 | 58 | 56 | 54 |
| 1.25 | 64 | 61 | 59 | 63 | 61 | 59 | 62 | 60 | 58 | 56 |
| 1.50 | 65 | 63 | 61 | 65 | 62 | 61 | 63 | 61 | 60 | 57 |
| 2.00 | 67 | 64 | 63 | 66 | 64 | 62 | 64 | 62 | 61 | 58 |
| 2.50 | 67 | 65 | 64 | 67 | 65 | 63 | 65 | 63 | 62 | 59 |
| 3.00 | 68 | 66 | 65 | 67 | 66 | 64 | 65 | 64 | 63 | 59 |
| 4.00 | 69 | 68 | 67 | 68 | 67 | 66 | 66 | 65 | 64 | 60 |
| 5.00 | 70 | 69 | 68 | 69 | 68 | 67 | 66 | 66 | 65 | 61 |
| ROOM INDEX | UF(total) | | | | | | | | | Direct |
| According to DIN EN 13032-2 2004 | | | Suspended | | | | | SHRNOM = 1.25 | | |

C Range: 0 - 360DEG
C Interval: 30.0DEG
Test Speed: HIGH
Temperature:25.3℃
Operators:zoe
Test Date:2024-5-23

Range: 0 - 180DEG
Interval: 1.0DEG
Test System:EVERFINE GO-SPEX500_V1 SYSTEM V2.00.461
Humidity:65.0%
Test Distance:3.160m [K=1.0000]
Remarks: LAMP:BXRE-30G10TH-A-83 Ra:90
LENS:PM-1082B-WH 36R
NO DRIVER:300mA
30minutes warm-up

ISOCANDELA DIAGRAM

| | | |
|---|---------------------|------------------------|
| Test:U:33.776V I:0.3000A P:10.133W PF:1.0000 Freq:0Hz Lamp Flux:1537.95x1 lm | | |
| NAME: 2318.113-LEE-24-HE | TYPE: | WEIGHT: |
| SPEC.: 3000K | DIM.: | SERIAL No.: 2405230576 |
| MFR.: RISE | SUR.: 0.000961625m2 | Shielding Angle: |

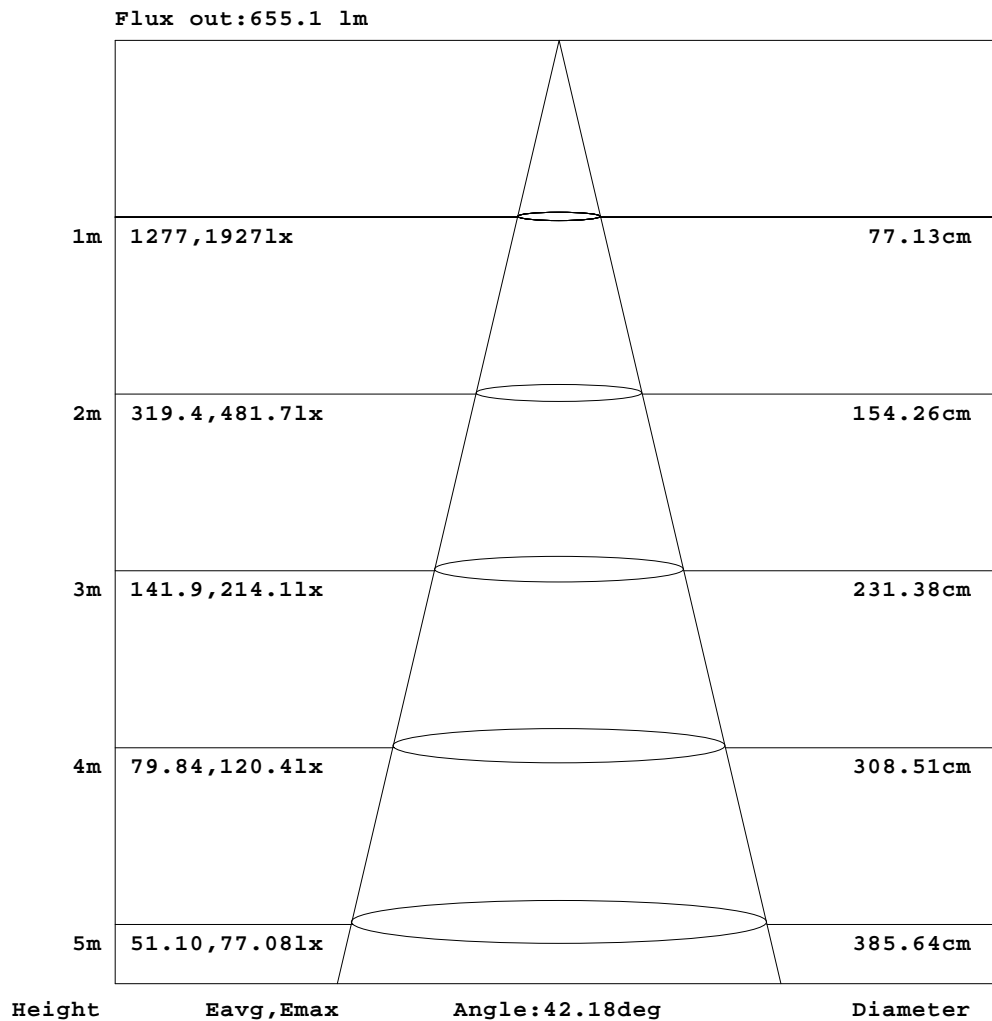


C Range: 0 - 360DEG
C Interval: 30.0DEG
Test Speed: HIGH
Temperature:25.3℃
Operators:zoe
Test Date:2024-5-23

Range: 0 - 180DEG
Interval: 1.0DEG
Test System:EVERFINE GO-SPEX500_V1 SYSTEM V2.00.461
Humidity:65.0%
Test Distance:3.160m [K=1.0000]
Remarks: LAMP:BXRE-30G10TH-A-83 Ra:90
LENS:PM-1082B-WH 36R
NO DRIVER:300mA
30minutes warm-up

AAI Figure

| | | |
|---|---------------------|------------------------|
| Test:U:33.776V I:0.3000A P:10.133W PF:1.0000 Freq:0Hz Lamp Flux:1537.95x1 lm | | |
| NAME: 2318.113-LEE-24-HE | TYPE: | WEIGHT: |
| SPEC.: 3000K | DIM.: | SERIAL No.: 2405230576 |
| MFR.: RISE | SUR.: 0.000961625m2 | Shielding Angle: |



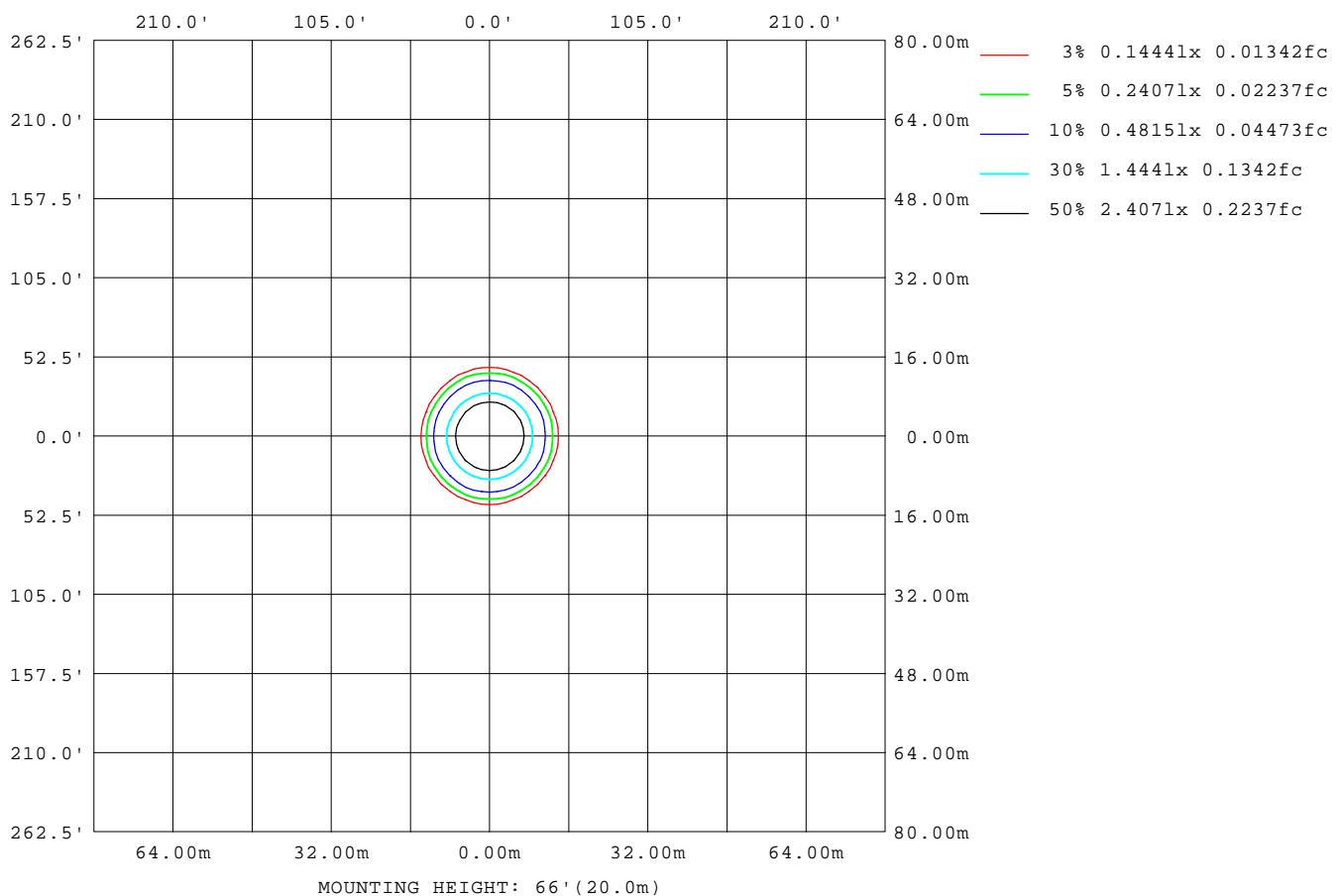
Note:The Curves indicate the illuminated area and the average illumination when the luminaire is at different distance.

C Range: 0 - 360DEG
C Interval: 30.0DEG
Test Speed: HIGH
Temperature:25.3℃
Operators:zoe
Test Date:2024-5-23

Range: 0 - 180DEG
Interval: 1.0DEG
Test System:EVERFINE GO-SPEX500_V1 SYSTEM V2.00.461
Humidity:65.0%
Test Distance:3.160m [K=1.0000]
Remarks: LAMP:BXRE-30G10TH-A-83 Ra:90
LENS:PM-1082B-WH 36R
NO DRIVER:300mA
30minutes warm-up

ISOLUX DIAGRAM

| | | |
|---|---------------------|------------------------|
| Test:U:33.776V I:0.3000A P:10.133W PF:1.0000 Freq:0Hz Lamp Flux:1537.95x1 lm | | |
| NAME: 2318.113-LEE-24-HE | TYPE: | WEIGHT: |
| SPEC.: 3000K | DIM.: | SERIAL No.: 2405230576 |
| MFR.: RISE | SUR.: 0.000961625m2 | Shielding Angle: |



C Range: 0 - 360DEG
C Interval: 30.0DEG
Test Speed: HIGH
Temperature:25.3℃
Operators:zoe
Test Date:2024-5-23

Range: 0 - 180DEG
Interval: 1.0DEG
Test System:EVERFINE GO-SPEX500_V1 SYSTEM V2.00.461
Humidity:65.0%
Test Distance:3.160m [K=1.0000]
Remarks: LAMP:BXRE-30G10TH-A-83 Ra:90
LENS:PM-1082B-WH 36R
NO DRIVER:300mA
30minutes warm-up

LED Avg.L Report

| | | |
|---|---------------------|------------------------|
| Test:U:33.776V I:0.3000A P:10.133W PF:1.0000 Freq:0Hz Lamp Flux:1537.95x1 lm | | |
| NAME: 2318.113-LEE-24-HE | TYPE: | WEIGHT: |
| SPEC.: 3000K | DIM.: | SERIAL No.: 2405230576 |
| MFR.: RISE | SUR.: 0.000961625m2 | Shielding Angle: |

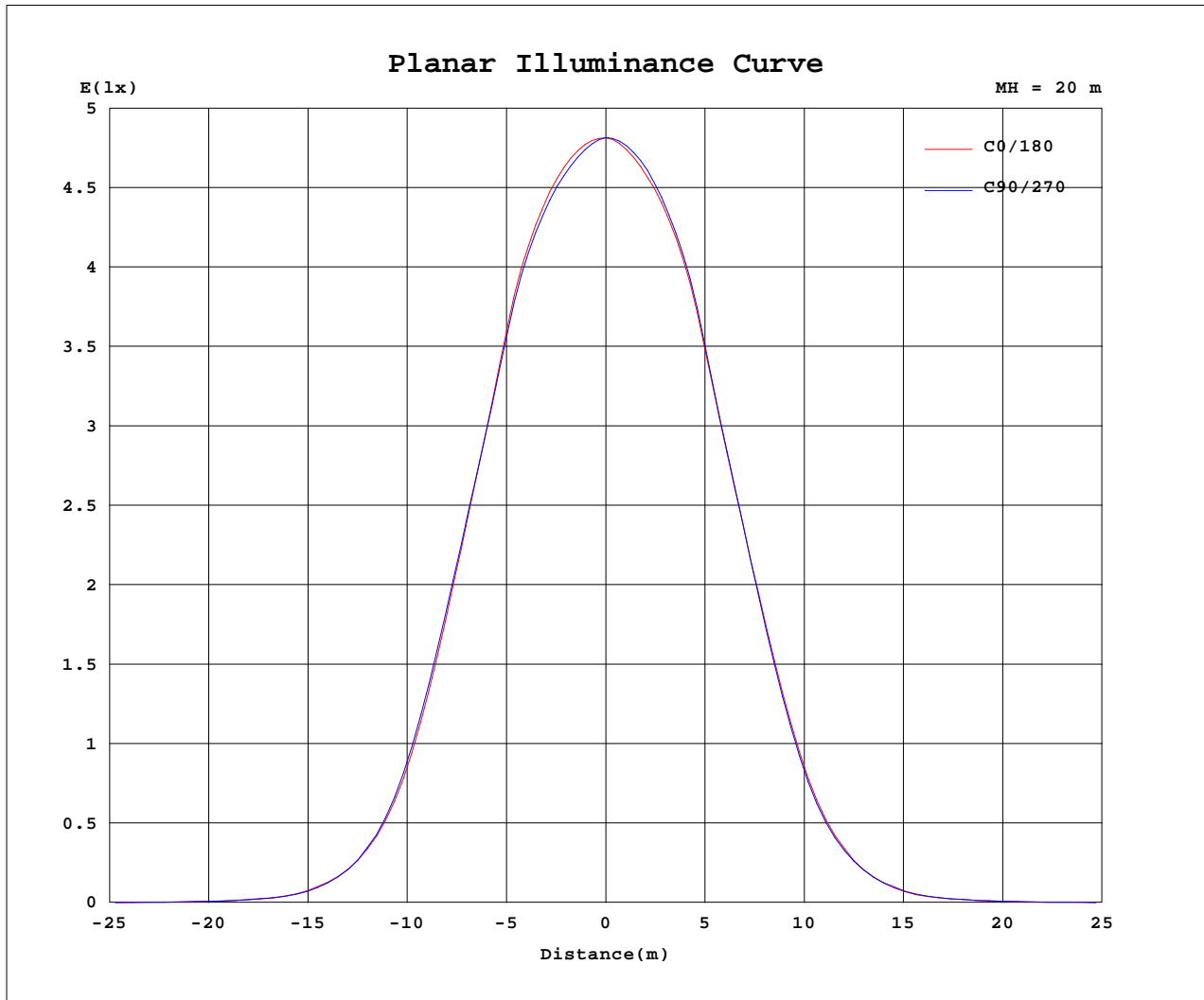
| AvgL | cd/m2 |
|----------------|-------|
| L_0~180(65)av | 909 |
| L_0~180(75)av | 683 |
| L_0~180(85)av | 605 |
| L_90~270(65)av | 548 |
| L_90~270(75)av | 497 |
| L_90~270(85)av | 613 |
| L_45(65)av | 637 |
| L_45(75)av | 515 |
| L_45(85)av | 491 |

Standard: GB/T 29293-2012

C Range: 0 - 360DEG
C Interval: 30.0DEG
Test Speed: HIGH
Temperature:25.3℃
Operators:zoe
Test Date:2024-5-23

Range: 0 - 180DEG
Interval: 1.0DEG
Test System:EVERFINE GO-SPEX500_V1 SYSTEM V2.00.461
Humidity:65.0%
Test Distance:3.160m [K=1.0000]
Remarks: LAMP:BXRE-30G10TH-A-83 Ra:90
LENS:PM-1082B-WH 36R
NO DRIVER:300mA
30minutes warm-up

Planar Illuminance Curve



C Range: 0 - 360DEG
 C Interval: 30.0DEG
 Test Speed: HIGH
 Temperature: 25.3 °C
 Operators: zoe
 Test Date: 2024-5-23

Range: 0 - 180DEG
 Interval: 1.0DEG
 Test System: EVERFINE GO-SPEX500_V1 SYSTEM V2.00.461
 Humidity: 65.0%
 Test Distance: 3.160m [K=1.0000]
 Remarks: LAMP: BXRE-30G10TH-A-83 Ra: 90
 LENS: PM-1082B-WH 36R
 NO DRIVER: 300mA
 30minutes warm-up



LUMINOUS DISTRIBUTION INTENSITY DATA

| | | |
|---|---------------------|------------------------|
| Test:U:33.776V I:0.3000A P:10.133W PF:1.0000 Freq:0Hz Lamp Flux:1537.95x1 lm | | |
| NAME: 2318.113-LEE-24-HE | TYPE: | WEIGHT: |
| SPEC.: 3000K | DIM.: | SERIAL No.: 2405230576 |
| MFR.: RISE | SUR.: 0.000961625m2 | Shielding Angle: |

Table--1

UNIT: cd

| C(DEG) (DEG) | 0 | 30 | 60 | 90 | 120 | 150 | 180 | 210 | 240 | 270 | 300 | 330 | | | | | | |
|-----------------|------|------|------|------|------|------|------|------|------|------|------|------|--|--|--|--|--|--|
| 0 | 1926 | 1926 | 1926 | 1926 | 1926 | 1926 | 1926 | 1926 | 1926 | 1926 | 1926 | 1926 | | | | | | |
| 5 | 1897 | 1890 | 1881 | 1877 | 1873 | 1873 | 1876 | 1875 | 1883 | 1891 | 1898 | 1904 | | | | | | |
| 10 | 1786 | 1781 | 1766 | 1766 | 1754 | 1759 | 1754 | 1737 | 1757 | 1765 | 1788 | 1799 | | | | | | |
| 15 | 1499 | 1494 | 1482 | 1487 | 1471 | 1466 | 1451 | 1429 | 1452 | 1457 | 1488 | 1509 | | | | | | |
| 20 | 1076 | 1079 | 1079 | 1089 | 1076 | 1060 | 1048 | 1030 | 1049 | 1046 | 1063 | 1085 | | | | | | |
| 25 | 609 | 615 | 621 | 631 | 626 | 614 | 606 | 585 | 600 | 593 | 598 | 613 | | | | | | |
| 30 | 258 | 259 | 259 | 264 | 265 | 263 | 260 | 246 | 256 | 251 | 252 | 258 | | | | | | |
| 35 | 93.4 | 93.2 | 90.5 | 90.3 | 90.2 | 91.6 | 89.7 | 88.7 | 92.8 | 91.1 | 90.5 | 91.7 | | | | | | |
| 40 | 28.3 | 28.1 | 27.8 | 27.0 | 26.5 | 27.8 | 27.3 | 25.8 | 27.7 | 27.7 | 27.3 | 26.9 | | | | | | |
| 45 | 9.79 | 9.34 | 9.56 | 9.00 | 8.76 | 9.36 | 9.43 | 9.30 | 9.37 | 9.76 | 9.70 | 9.86 | | | | | | |
| 50 | 3.33 | 2.91 | 2.70 | 2.60 | 2.69 | 2.82 | 3.04 | 3.13 | 3.23 | 3.00 | 3.05 | 3.08 | | | | | | |
| 55 | 1.50 | 1.25 | 1.12 | 1.09 | 1.09 | 1.26 | 1.45 | 1.43 | 1.35 | 1.33 | 1.36 | 1.44 | | | | | | |
| 60 | 0.78 | 0.59 | 0.50 | 0.47 | 0.48 | 0.60 | 0.76 | 0.75 | 0.68 | 0.66 | 0.67 | 0.74 | | | | | | |
| 65 | 0.37 | 0.23 | 0.16 | 0.14 | 0.15 | 0.23 | 0.37 | 0.36 | 0.31 | 0.30 | 0.31 | 0.36 | | | | | | |
| 70 | 0.26 | 0.15 | 0.10 | 0.09 | 0.09 | 0.15 | 0.25 | 0.24 | 0.21 | 0.21 | 0.22 | 0.24 | | | | | | |
| 75 | 0.18 | 0.11 | 0.09 | 0.08 | 0.08 | 0.11 | 0.16 | 0.16 | 0.16 | 0.16 | 0.16 | 0.17 | | | | | | |
| 80 | 0.10 | 0.08 | 0.07 | 0.07 | 0.07 | 0.07 | 0.09 | 0.09 | 0.10 | 0.10 | 0.10 | 0.10 | | | | | | |
| 85 | 0.06 | 0.04 | 0.03 | 0.04 | 0.03 | 0.04 | 0.04 | 0.04 | 0.05 | 0.06 | 0.06 | 0.05 | | | | | | |
| 90 | 0.00 | 0.00 | 0.00 | 0.00 | 0.00 | 0.00 | 0.00 | 0.00 | 0.00 | 0.00 | 0.00 | 0.00 | | | | | | |
| 95 | 0.00 | 0.00 | 0.00 | 0.00 | 0.00 | 0.00 | 0.00 | 0.00 | 0.00 | 0.00 | 0.00 | 0.00 | | | | | | |
| 100 | 0.00 | 0.00 | 0.00 | 0.00 | 0.00 | 0.00 | 0.00 | 0.00 | 0.00 | 0.00 | 0.00 | 0.00 | | | | | | |
| 105 | 0.00 | 0.00 | 0.00 | 0.00 | 0.00 | 0.00 | 0.00 | 0.00 | 0.00 | 0.00 | 0.00 | 0.00 | | | | | | |
| 110 | 0.00 | 0.00 | 0.00 | 0.00 | 0.00 | 0.00 | 0.00 | 0.00 | 0.00 | 0.00 | 0.00 | 0.00 | | | | | | |
| 115 | 0.00 | 0.00 | 0.00 | 0.00 | 0.00 | 0.00 | 0.00 | 0.00 | 0.00 | 0.00 | 0.00 | 0.00 | | | | | | |
| 120 | 0.00 | 0.00 | 0.00 | 0.00 | 0.00 | 0.00 | 0.00 | 0.00 | 0.00 | 0.00 | 0.00 | 0.00 | | | | | | |
| 125 | 0.00 | 0.00 | 0.00 | 0.00 | 0.00 | 0.00 | 0.00 | 0.00 | 0.00 | 0.00 | 0.00 | 0.00 | | | | | | |
| 130 | 0.00 | 0.00 | 0.00 | 0.00 | 0.00 | 0.00 | 0.00 | 0.00 | 0.00 | 0.00 | 0.00 | 0.00 | | | | | | |
| 135 | 0.00 | 0.00 | 0.00 | 0.00 | 0.00 | 0.00 | 0.00 | 0.00 | 0.00 | 0.00 | 0.00 | 0.00 | | | | | | |
| 140 | 0.00 | 0.00 | 0.00 | 0.00 | 0.00 | 0.00 | 0.00 | 0.00 | 0.00 | 0.00 | 0.00 | 0.00 | | | | | | |
| 145 | 0.00 | 0.00 | 0.00 | 0.00 | 0.00 | 0.00 | 0.00 | 0.00 | 0.00 | 0.00 | 0.00 | 0.00 | | | | | | |
| 150 | 0.00 | 0.00 | 0.00 | 0.00 | 0.00 | 0.00 | 0.00 | 0.00 | 0.00 | 0.00 | 0.00 | 0.00 | | | | | | |
| 155 | 0.00 | 0.00 | 0.00 | 0.00 | 0.00 | 0.00 | 0.00 | 0.00 | 0.00 | 0.00 | 0.00 | 0.00 | | | | | | |
| 160 | 0.00 | 0.00 | 0.00 | 0.00 | 0.00 | 0.00 | 0.00 | 0.00 | 0.00 | 0.00 | 0.00 | 0.00 | | | | | | |
| 165 | 0.00 | 0.00 | 0.00 | 0.00 | 0.00 | 0.00 | 0.00 | 0.00 | 0.00 | 0.00 | 0.00 | 0.00 | | | | | | |
| 170 | 0.00 | 0.00 | 0.00 | 0.00 | 0.00 | 0.00 | 0.00 | 0.00 | 0.00 | 0.00 | 0.00 | 0.00 | | | | | | |
| 175 | 0.00 | 0.00 | 0.00 | 0.00 | 0.00 | 0.00 | 0.00 | 0.00 | 0.00 | 0.00 | 0.00 | 0.00 | | | | | | |
| 180 | 0.00 | 0.00 | 0.00 | 0.00 | 0.00 | 0.00 | 0.00 | 0.00 | 0.00 | 0.00 | 0.00 | 0.00 | | | | | | |

C Range: 0 - 360DEG
C Interval: 30.0DEG
Test Speed: HIGH
Temperature:25.3℃
Operators:zoe
Test Date:2024-5-23

Range: 0 - 180DEG
Interval: 1.0DEG
Test System:EVERFINE GO-SPEX500_V1 SYSTEM V2.00.461
Humidity:65.0%
Test Distance:3.160m [K=1.0000]
Remarks: LAMP:BXRE-30G10TH-A-83 Ra:90
LENS:PM-1082B-WH 36R
NO DRIVER:300mA
30minutes warm-up